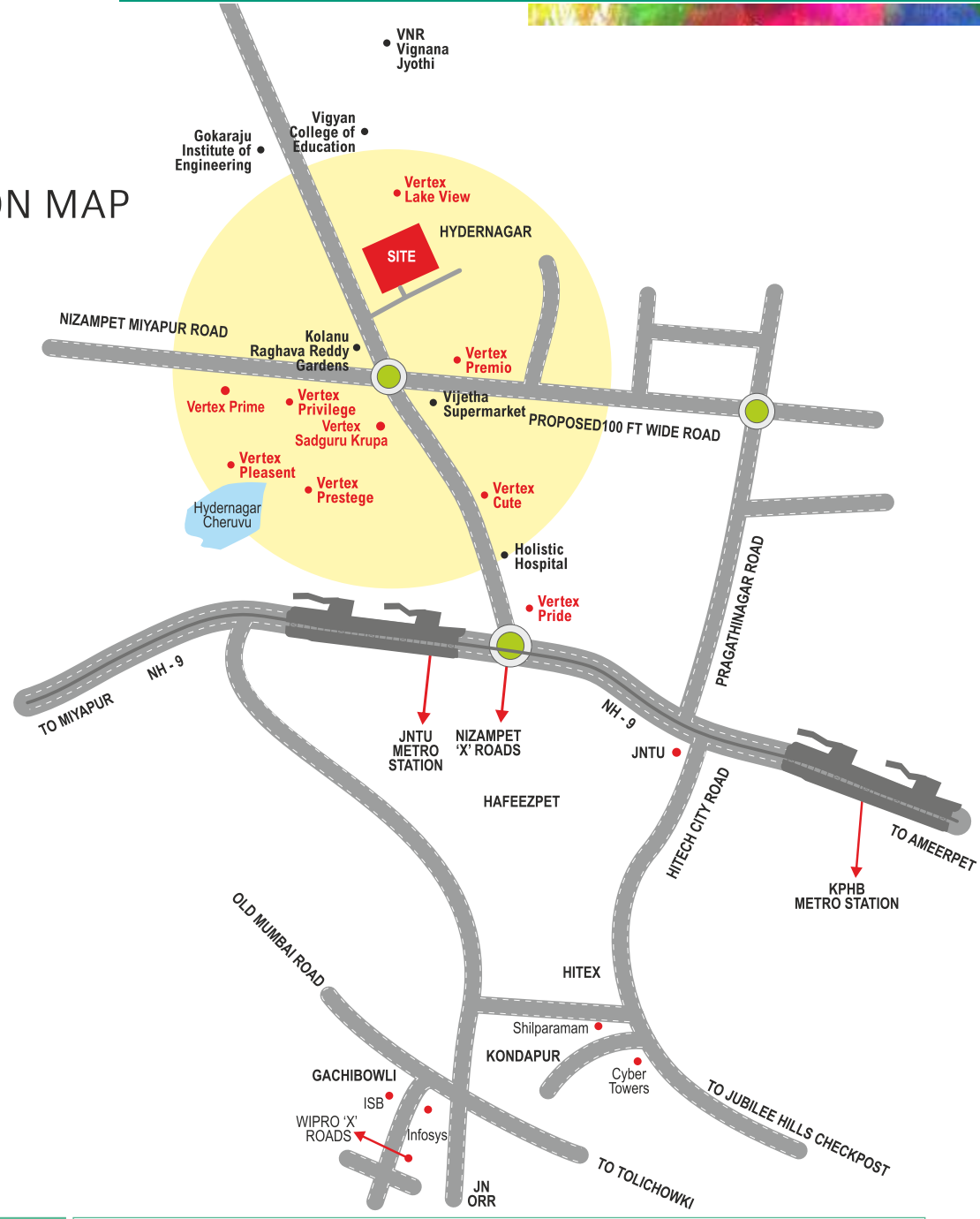




LOCATION MAP
(NOT TO SCALE)



THE WORLD IS YOUR NEIGHBOURHOOD

METRO STATION	JNTU	0.8 Kms	HOSPITALS	Holistic Hospitals	1.0 Kms
SCHOOLS	Narayana Concept School	1.0 Kms	Landmark Hospitals	2.0 Kms	
	Sanghamitra School	1.5 Kms	Pulse Heart Centre	2.5 Kms	
	JNTU 2 Kms		Rainbow Children Hospital	2.5 Kms	
	Sri Chaitanya Jr College	3.0 Kms	SHOPPING MALLS	Decathlon	2.0 Kms
	Vikas Concept School	6.0 Kms	Manjeera Mall	3.0 Kms	
	Oakridge International School	10.0 Kms	Forum Mall	4.0 Kms	



VERTEX CORPORATE
4th Floor, Plot No. 8 & 9, Jubilee Enclave
Opp. HITEX Entrance, Madhapur,
Hyderabad-500 081
Ph: 040-4849-99-99
www.vertexhomes.com

ARCHITECTS
GENESIS Genesis Planners Pvt. Ltd.
P-559, Road #92, Phase-III,
Jubilee Hills, Hyderabad,
Telangana - 33
Phone: 040 6697 7777

For Enquiries, Please Call: +91 9019 668 668

Note: This brochure is purely a conceptual presentation and not a legal offering. The promoters reserve the right to make changes in elevation, specifications and plans as deemed fit



VERTEX
PRISTINE
Hyder Nagar, Hyderabad
2 & 3 BHK Premium Gated Community

VIVID COMMUNITY THAT'S TRULY A CLASS APART!



Poised to be more than just an address



UNPARALLELED FEATURES

A new frontier in living has never been more seamless and rewarding. Vast open spaces enable residents enjoy expansive central park, designer landscapes and play areas. Beautifully designed communal spaces offer residents opportunities to socialise with neighbours and friends.

HI-LIGHTS

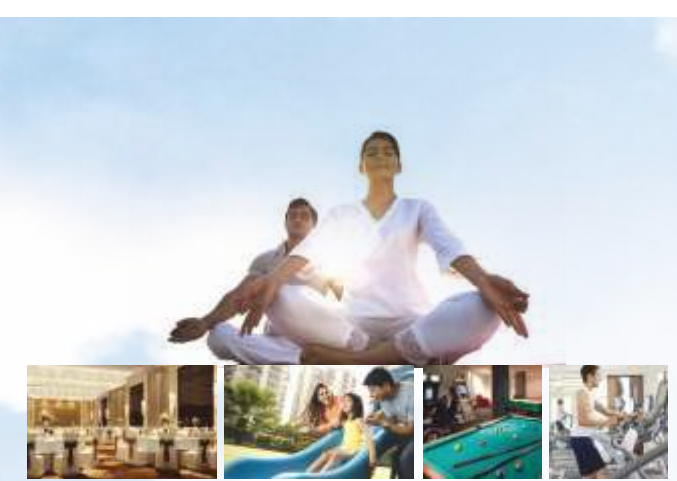
- GHMC - Approved project
- Site Area 3.9 Acres
- 309 Premium Apartments
- 2 & 3 BHK Apartments
- 5 Blocks
- Number of Floors: 2 cellars + GF + 9 Floors
- Visitors' Lounge for each block
- 100% Vastu compliant
- Clubhouse - G + 3 Floors
- Club House area 15, 000 Sft
- Central Party Lawn
- Majestic entrance gate
- Controlled Entry & Exit
- Cellar parking
- Children play area
- Designer landscaping

Life is alluringly effortless at Pristine. Purposefully designed to maintain the perfect balance between work, life and play, residents can enjoy everything within easy reach.

Every day ensures fresh living with parks, lawns, landscaped walkways and a pristine pool to rejuvenate. Pristine is the perfect backdrop for luxury family living.

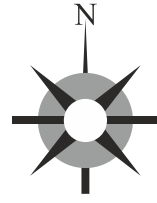
AMENITIES

- + Roof Top Pool
- + Kids pool
- + Multi-purpose hall with dining
- + Gym
- + Creche
- + Indoor games
- + Yoga
- + Billiard's lounge
- + Guest rooms
- + Library



CELEBRATE A TRUE SENSE OF LEISURE





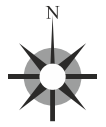
PRISTINE

Hyder Nagar, Hyderabad

2 & 3 BHK Premium Gated Community

MASTER PLAN

IMPRESSION THAT LASTS A LIFETIME



BLOCK A TYPICAL FLOOR PLAN

All 2 & 3 BHK
Sizes: 1500 to 2030 sft

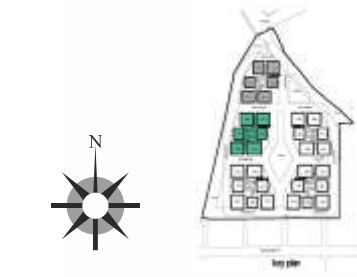


LEGEND

- | | | |
|--------------------------|-----------------------------|----------------------------------|
| 01 ENTRANCE & EXIT GATES | 08 MOUND WITH SPECIMEN TREE | 15 PLANTER BOX |
| 02 JOGGING TRACK | 09 HALF BASKET BALL COURT | 16 RAMP |
| 03 LAWN | 10 CRICKET PITCH | 17 FIRE DRIVEWAY ENTRANCE PAVING |
| 04 VDF DRIVE WAY | 11 FITNESS STATION | 18 BADMINTON COURTS |
| 05 SEATING DECK | 12 AMPHITHEATRE WITH STAGE | 19 COFFEE DECK |
| 06 CHILDREN'S PLAY AREA | 13 STEPPING STONE | 20 YOGA DECK |
| 07 FIRE DRIVE WAY | 14 CC KERBING WITH SWALE | |

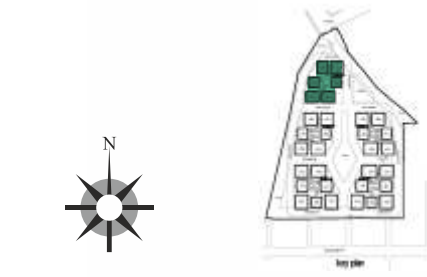
BLOCK B
TYPICAL FLOOR PLAN

2 and 3 BHK
Sizes: 1285 to 2030 sft



BLOCK C
TYPICAL FLOOR PLAN

2 and 3 BHK
Sizes: 1285 to 1680 sft



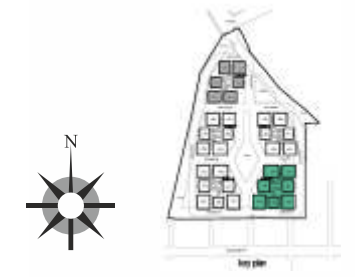
BLOCK D
TYPICAL FLOOR PLAN

2 and 3 BHK
Sizes: 1285 to 2030 sft



BLOCK E
TYPICAL FLOOR PLAN

2 and 3 BHK
Sizes: 1270 to 2030 sft



SPECIFICATIONS

- Framed Structure** : RCC framed structure to withstand wind and seismic loads
- Super Structure** : 8" thick solid block work for external walls and 4" thick solid block work for internal wall
- Plastering** : Double coat of cement mortar plaster for external walls and single coat for internal walls
- Doors & Windows** :
 - > **Main Door** : Factory made (Prehung) Engineered doors with imported wood frame and flush shutter with teak veneer, melamine polish and designer hardware of reputed make
 - > **Internal Doors** : Manufactured hard wood door frame and laminate shutter and hardware of reputed make
 - > **Toilet Door** : Manufactured hard wood door frame and laminate shutter and hardware of reputed make
 - > **Balcony Doors** : Manufactured hard wood door frame and laminated shutter and hardware of reputed make
 - > **French Door** : Aluminium/UPVC frames and shutters with glass panels with hardware of reputed make
 - > **Windows** : Aluminium/UPVC frames and shutters with glass panels with hardware of reputed make
- Painting :**
 - > **Internal Walls** : Premium Emulsion paint with putty finish of reputed make for walls and ceiling
 - > **External Walls** : Textured finish with 2 coats of exterior emulsion paint of reputed make for walls and enamel paint for MS grills and railing
- Flooring :**
 - > **All rooms** : 600mm X 600mm vitrified tiles with 4" skirting
 - > **Toilets, Balcony & utility** : Anti-skid ceramic tiles
 - > **Corridor** : Vitrified/Ceramic tiles
 - > **Staircase** : Tandoor stone for steps and mid-landing
- Cladding/Dadoing** :
 - > Dadoing up to 7' height with designed ceramic tiles in all toilets
 - > Ceramic tiles up to 2' height above kitchen platform
 - > Ceramic tiles up to 3' height in utility/wash area
 - > Vitrified/Granite tile cladding for lift entrance

- Kitchen:**
 - > Granite platform
 - > Stainless steel sink with drain board
- Toilets:**
 - > EWC of reputed make
 - > Hot & Cold water mixer with shower of reputed make
 - > Provision for geyser points in all toilets
 - > All CP fittings of reputed make
- Electrical:**
 - > Concealed copper wiring in conduits for lights, fans, TV, Computers and power points wherever necessary
 - > Power points for air conditioners in all bedrooms and other identified areas
 - > Power points for refrigerators and cookig appliances in kitchen
 - > Power points for geysers in all bathrooms
 - > All electrical fittings of reputed make
 - > MCB of distribution board of reputed make
 - > 3 phase supply for each unit and individual meter boards
- Communication, Cable TV & Internet:**
 - > Telephone points in living room and master bedroom
 - > Provision for Cable TV connection in master bedroom and living room
 - > Provision for internet connection in all flats
 - > Intercom facility to all flats connecting security
- Power backup** : Partial power backup through generator
- Lifts** : Auto shutter lifts for each block - Johnson/Kone or equivalent make
- Other Amenities:**
 - > Domestic water made available through Water Softening Plant (Not RO Plant)
 - > Sewage Treatment Plant with treated sewage water supply for toilet flush and landscaping
 - > Piped Gas supply for each flat
 - > Fire safety protections as per norms

EXPERIENCE AN
UNPARALLELED
COMMUNITY

VERTEX
PRISTINE

Hyder Nagar, Hyderabad

2 & 3 BHK Premium Gated Community

